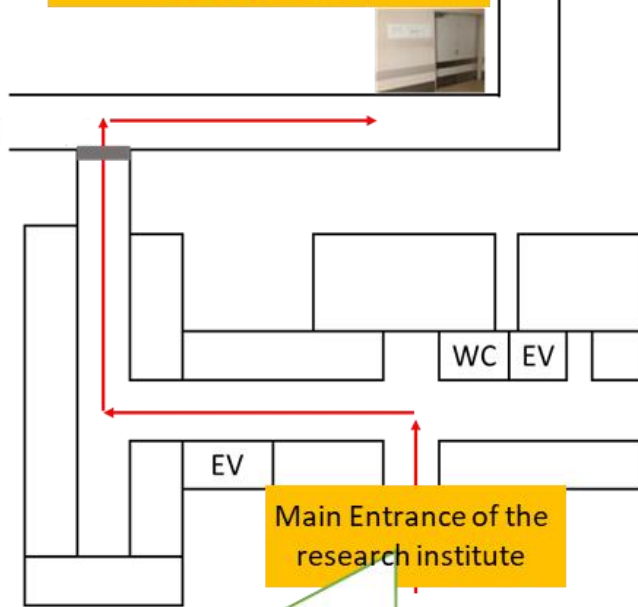


Route from the main entrance of the research institute

Genome Medical Science Project  
+81-3-6205-6572



Main Entrance of the research institute

Please ask the person in the office to call Ext. 2273 Genome Medical Science Project.

Route from the main entrance of the hospital



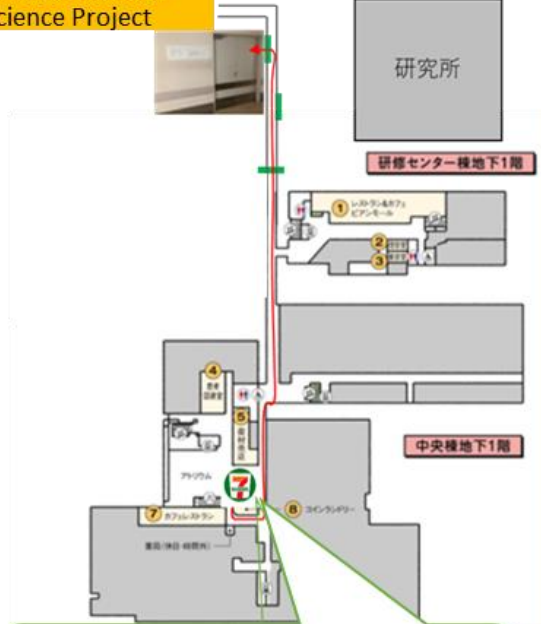
Take the escalator down to the basement level.

Main entrance of the hospital

To Wakamatsu-Kawada station

1F

Genome Medical Science Project



When you go down the escalator, you will see a 7-Eleven, please go around the back.

B1F